

ALEXA LF Sample Footage

TECHNICAL INFORMATION

Date: 4th April 2018

Introduction

ARRI provides sample footage, shot on an ALEXA LF camera with a release version of SUP 2.0. This document provides an overview of the footage.

The shots are intended for anyone who wants to test the workflow with ALEXA LF ProRes and/or ARRIRAW files.

Use the clips to check your color pipeline, file conversion, grading paths or our ARRI Look File 2. Test the performance of your editorial and postproduction systems.

Sample Footage in detail

All clips were captured with a production model ARRI ALEXA LF camera. We've shot two different types of clips: QuickTime ProRes 4444 and ARRIRAW.

Each clip is shot with the following settings if not otherwise noted: 24fps, 400 or 800ASA, 3200K; shooting gamma for all clips is Log C.

Clip Overview

Reel	Clip	Codec	Sensor Mode	Resolution	FPS	Lens'	Lens Sq.	Look	Audio	Size
B001	C001	ProRes 4444	LF 16:9	HD 1920x1080	24	SP 40/T1.8	1.0	ARRI 709	x	703 MB
	C002	ProRes 4444	LF 16:9	2k 2048x1152	24	SP 40/T1.8	1.0	ARRI 709	x	763 MB
	C003	ProRes 4444	LF 16:9	4K UHD 3840x2160	24	SP 40/T1.8	1.0	ARRI 709	x	2.5 GB
	C004	ProRes 4444	LF 16:9	4K UHD 3840x2160	24	SP 40/T1.8	1.0	BleachByPassLook	x	2.8 GB
	C005	ProRes 4444	LF 16:9	4K UHD 3840x2160	24	SP 40/T1.8	1.0	CoolWaterCustom	x	3.0 GB
	C006	ProRes 4444	LF 16:9	4K UHD 3840x2160	24	SP 40/T1.8	1.0	Landscape	x	2.8 GB
	C007	ProRes 4444	LF 2.39:1	Scope 4.5K 4448x1856	24	SP 40/T1.8	1.0	ARRI 709	x	2.7 GB
	C008	ProRes 4444	LF Open Gate	OG 4.5K 4448x3096	24	SP 40/T1.8	1.0	ARRI 709	x	4.8 GB
	C010	ProRes 4444	LF 2.39:1	Scope 4.5K 4448x1856	100	SP 40/T1.8	1.0	ARRI 709	-	2.9 GB
B002	C006	ARRIRAW	LF 16:9	4K UHD 3840x2160	24	MA 100/T1.9	2.0	ARRI 709	-	6.9 GB
B003	C001	ARRIRAW	LF 16:9	4K UHD 3840x2160	24	SP 40/T1.8	1.0	ARRI 709	-	5.8 GB
	C002	ARRIRAW	LF 2.39:1	Scope 4.5K 4448x1856	24	SP 40/T1.8	1.0	ARRI 709	-	5.7 GB
	C003	ARRIRAW	LF Open Gate	OG 4.5K 4448x3096	24	SP 40/T1.8	1.0	ARRI 709	-	9.2 GB
	C005	ARRIRAW	LF 2.39:1	Scope 4.5K 4448x1856	150	SP 40/T1.8	1.0	ARRI 709	-	14.0 GB

Note: SP 40/T1.8 = ARRI Signature Prime 40/T1.8
MA 100/T1.9 = ARRI Master Anamorphic MA 100/T1.9

Music credit

We used the track “chicago dream center” by [SiP](#)

The music has been made available via:

http://freemusicarchive.org/music/SiP/live_at_the_whistler/01 - SiP - live_at_the_whistler - chicago_dream_center

It has been released under:

<https://creativecommons.org/licenses/by-nc-nd/3.0/>

How to access the Sample Footage

The ALEXA Mini Sample Footage is available for download via our FTP server.

Server: ftp-footage.arri.de

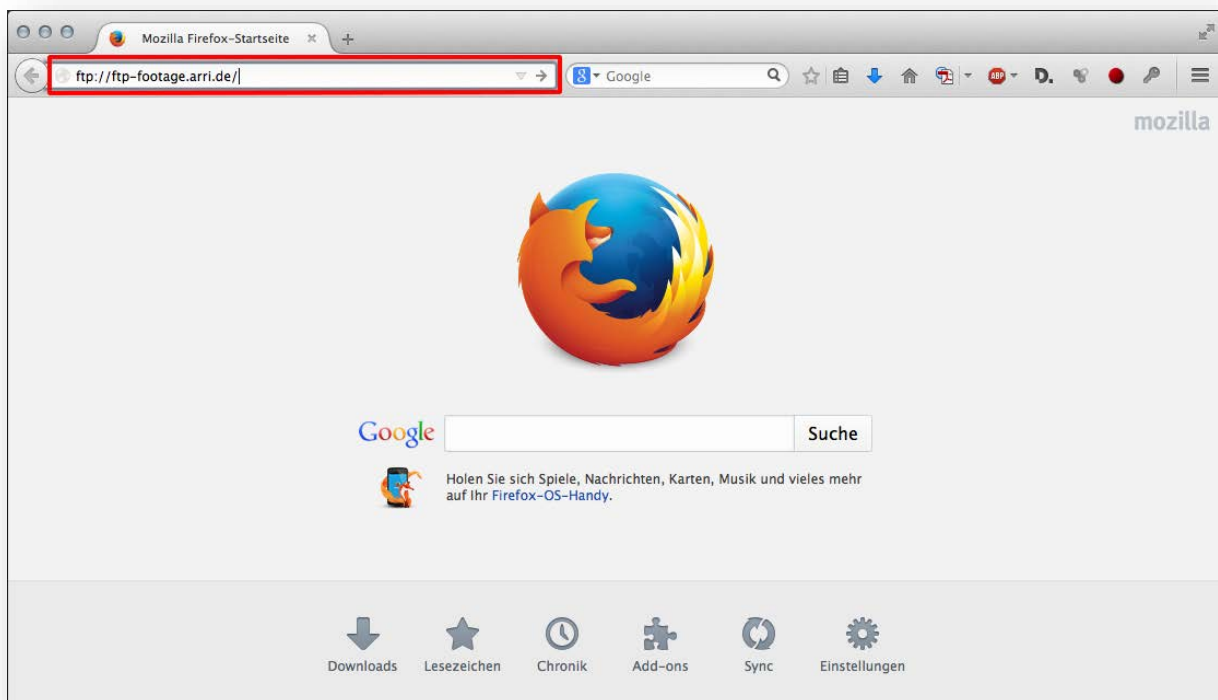
User: ALEXA

Password: samplefootage

Downloading footage from our FTP server

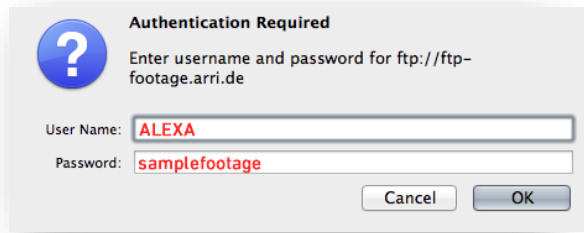
As written above, ALEXA as well as AMIRA sample footage is available from our FTP-server. Downloading data from an ftp-server can be done in two ways: via your browser or by using a FTP-tool. The browser-method does not require any installation.

FTP access in Firefox browser (others work similar)

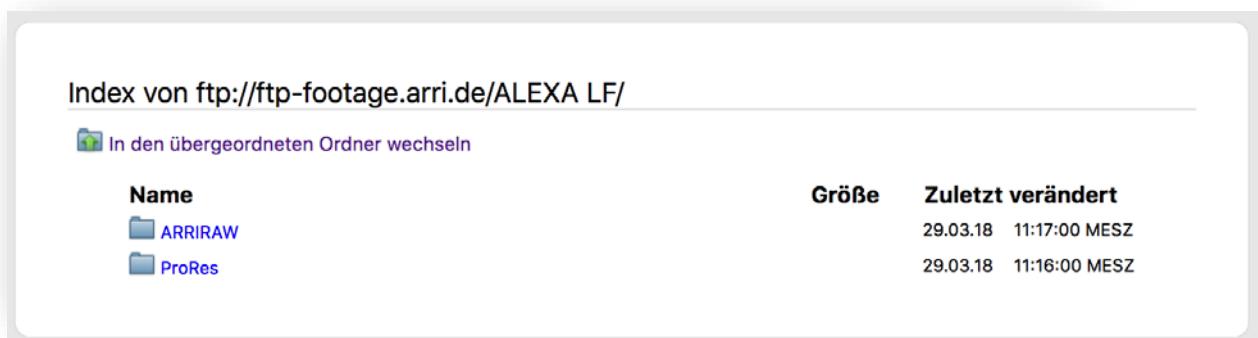


Type the server's name in the address-bar and press Enter. Don't forget the *ftp://* prefix, instead of *http://* for regular websites. It reads <ftp://ftp-footage.arri.de>

Next, the server will prompt for user name and password:



Click OK and you will see the content of the ALEXA LF folder:



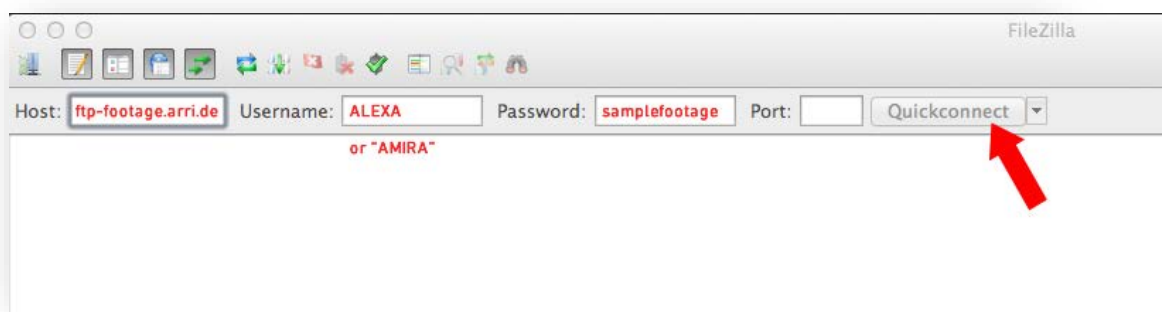
Browse the folders and download the desired files.

ALEXA Mini's MXF/ARRIRAW – opposed to ALEXA LF/XT/SXT ARRIRAW – is not a single frame file format; The frames are wrapped inside a MXF container, so you only have to copy one file instead of e.g. 10.000 (depending on the clip's runtime).

FTP access in Filezilla

Filezilla is a typical ftp-tool developed within an open source project. It is available for Mac, Linux and Windows operating systems. Go to <https://filezilla-project.org> to download and install your copy. If you've started Filezilla and everything seems confusing, have a look at the documentation: https://wiki.filezilla-project.org/FileZilla_Client_Tutorial_%28en%29

To access our sample footage server, fill in the fields as shown:

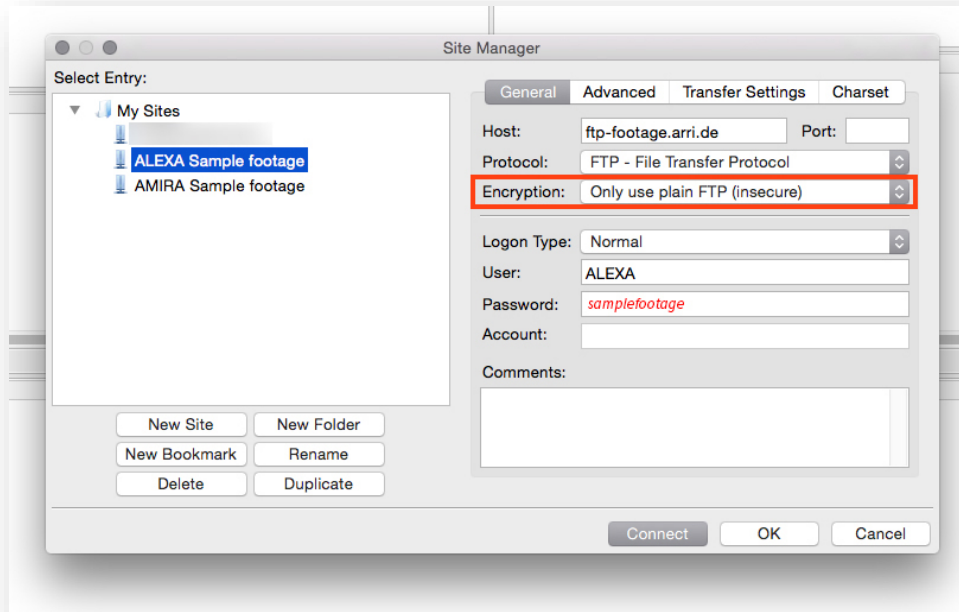


Choose "Quickconnect".

If you have troubles connecting please check your firewall settings or similar protective measurements. Once connected you will be presented with the folder structure in a familiar way (like in Finder or Explorer). Now you can drag & drop the folders to your local drive on the left side.

Please Note:

Make sure you have the latest version of FileZilla installed (V3.31.0 or later). In earlier versions “FTP over TLS” is enabled by default for all connections initiated via “Quickconnect”. As our server does not support TLS (Transport Layer Security) in earlier versions of FileZilla you need to add a connection to the Site Manager and set Encryption to “Only use plain FTP (insecure)”.



Additional Information

For further reading, please have a look at the following documents and files that can be found on our website at:

<https://www.arri.com/largeformat/>

- ALEXA LF Recording Areas, Surround Views and Framelines
- ARRI Recording Resolutions Overview
- ARRI Look File 2 - Looks in Editorial - Workflow Guide Line

If you have feedback or questions regarding the sample footage, please email us at digitalworkflow@arri.de.